

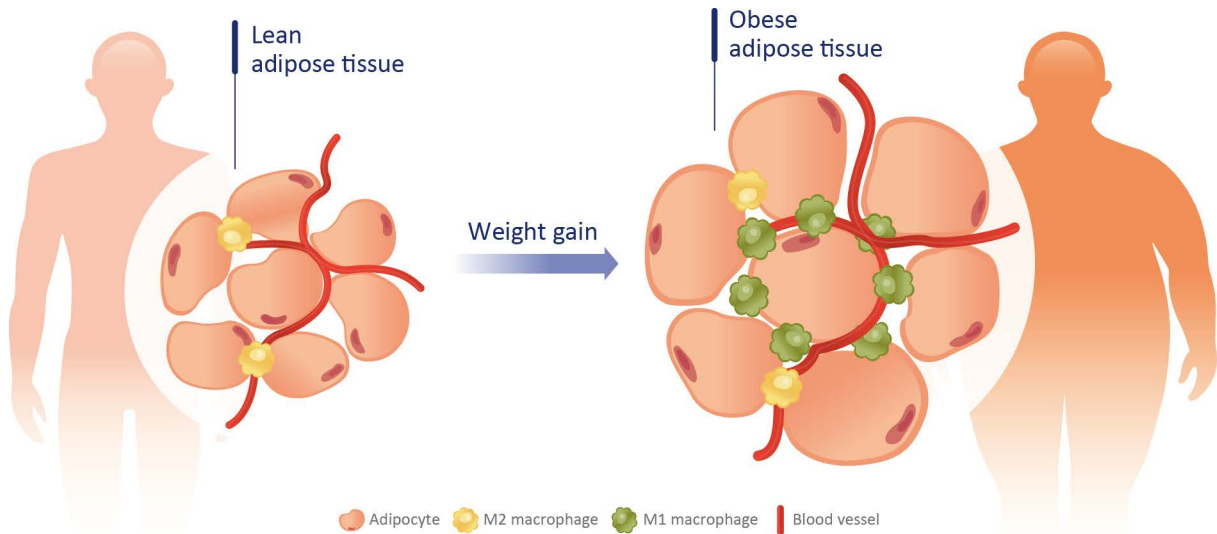
Obesity / Diabetes

www.genetex.com

Your Expertise

Our Antibodies

Accelerated Discovery

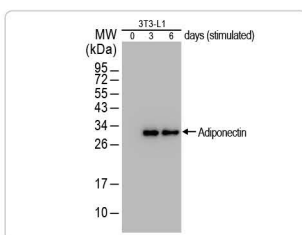


Obesity
Adipose Tissue inflammation

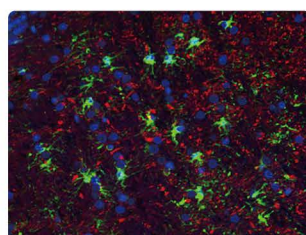
Adipokines

Citation Support
KO/KD Validation
Comparable Abs
Orthogonal Validation
Protein Overexpression

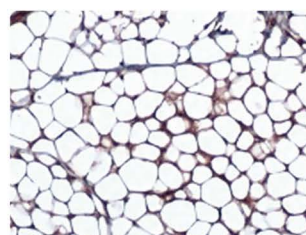
Cat. No.	Product Name	Clonality	Reactivity	Applications
GTX112777	Adiponectin antibody	Rb pAb	Hu, Ms, Rat	WB, IHC-P
GTX80683	Adiponectin antibody [19F1]	Ms mAb	Hu, Ms, Rb	WB, ICC/IF, IHC-P, ELISA, IHC
GTX31165	CXCL5 antibody	Rb pAb	Hu	WB, IHC-P, ELISA
GTX52669	CXCL5 antibody [10L19]	Ms mAb	Hu	WB, IHC-P, Neutralizing/Blocking
GTX74034	IL1 beta antibody	Rb pAb	Hu, Ms, Rat	WB, ICC/IF, IHC-P, IHC-Fr, ELISA, Functional Assay, IHC
GTX634188	IL1 beta antibody [GT289]	Ms mAb	Hu	WB, ICC/IF
GTX32675	IL-18 antibody	Rb pAb	Hu, Ms	WB
GTX110527	IL-6 antibody	Rb pAb	Hu, Ms	WB, IHC-P, IHC-Fr
GTX15762	IL-6 antibody [5IL6]	Ms mAb	Hu, Ms, Pig	WB, ICC/IF, FACS, ELISA, sELISA
GTX109204	Leptin antibody	Rb pAb	Hu, Ms	WB, IHC-P
GTX26056	Leptin antibody [3G7]	Ms mAb	Hu	WB, ELISA, sELISA
GTX64364	Lipocalin-2 antibody	Rb pAb	Hu	WB
GTX60969	Lipocalin-2 antibody [5G5]	Ms mAb	Hu	WB, ELISA, IHC-PFA
GTX81767	MCP1 / CCL2 antibody [2D9]	Rb pAb	Hu, Ms	WB, ICC/IF, IHC-P, FACS
GTX60582	MCP1 / CCL2 antibody, C-term	Ms mAb	Hu, Ms, Rat, Mk	WB, ICC/IF, IHC-P, FACS, ELISA
GTX110632	RBP4 antibody	Rb pAb	Hu	WB, ICC/IF, IHC-P
GTX60427	RBP4 antibody [4C2]	Ms mAb	Hu	WB, ICC/IF, IHC-P, FACS, ELISA
GTX59861	Resistin antibody	Rb pAb	Hu, Ms, Rat	WB
GTX114747	SFRP5 antibody	Rb pAb	Hu	WB, IHC-P
GTX110520	TNF alpha antibody	Rb pAb	Hu, Ms, Rat	WB, ICC/IF, IHC-P
GTX28349	TNF alpha antibody [F6C5]	Ms mAb	Hu	ELISA, IHC, sELISA
GTX128980	Visfatin antibody	Rb pAb	Hu, Ms, Rat	WB, ICC/IF, IHC-P, IP
GTX83046	Visfatin antibody [1D3A12]	Ms mAb	Hu	WB, ELISA



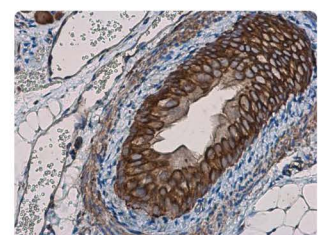
Adiponectin antibody
(GTX112777)



IL1 beta antibody
(GTX74034)

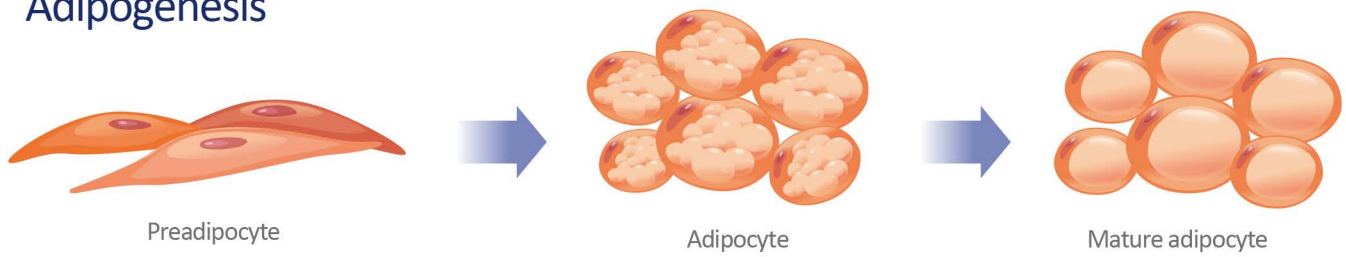


Leptin antibody (GTX109204)



TNF alpha antibody
(GTX110520)

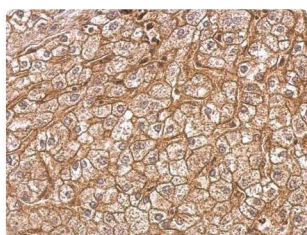
Adipogenesis



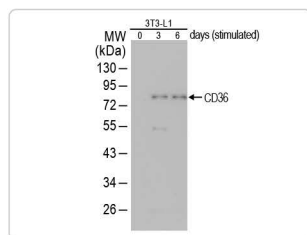
Cell Surface Markers

C Citation Support
 K KO/KD Validation
 O Orthogonal Validation
 P Protein Overexpression

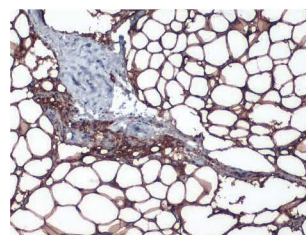
Cat. No.	Product Name	Clonality	Reactivity	Applications
GTX18040	CD10 antibody [MME/1870]	Ms mAb	Hu	WB, IHC-P, Protein Array
C GTX111680	CD10 antibody [N2C1], Internal	Rb pAb	Hu, Ms, Rat	WB, IHC-P
C P GTX102788	CD13 antibody	Rb pAb	Hu	WB, IHC-P
C GTX42441	CD13 antibody [WM15] (Low endotoxin, azide free)	Ms mAb	Hu, RMK	IHC-Fr, FACS, IP, ELISA, Functional Assay
C GTX37755	CD24 antibody	Rb pAb	Hu, Rat	WB, IHC-P
C GTX74945	CD24 antibody [SN3]	Ms mAb	Hu, Chmp	IHC-Fr, FACS
C GTX28158	CD34 antibody [MEC14.7]	Rat mAb	Hu, Ms, Rb	WB, ICC/IF, IHC-P, IHC-Fr, FACS, IP, ELISA, IHC
C GTX111632	CD34 antibody [N2C3]	Rb pAb	Hu	WB, IHC-Fr
P GTX84722	CD36 antibody [4H7]	Ms mAb	Hu, Ms, Dog, Mk	WB, ICC/IF, FACS
C K GTX100642	CD36 antibody [C1C3]	Rb pAb	Hu, Ms	WB, ICC/IF, IHC-P
GTX41915	CD55 antibody [BRIC216]	Ms mAb	Hu	WB, FACS, IP, Functional Assay
C K GTX113170	CD55 antibody [N1C2]	Rb pAb	Hu	WB, ICC/IF
K GTX132874	CD59 antibody	Rb pAb	Hu	WB
C GTX60658	CD59 antibody [8D2B8]	Ms mAb	Hu	WB, ICC/IF, IHC-P, FACS, ELISA
C GTX130072	CD90 antibody	Rb pAb	Hu, Ms	WB, IHC-Fr
C GTX11153	CD90 antibody [F15-42-1]	Ms mAb	Hu, CIMK	ICC/IF, IHC-Fr, FACS, IP
K GTX25185	Integrin beta 1 / CD29 (phospho Ser785) antibody	Rb pAb	Ms, Chk	WB
C K GTX25189	Integrin beta 1 / CD29 (phospho Thr788/Thr789) antibody	Rb pAb	Hu, Ms, Cat	WB, ICC/IF
C K O GTX128839	Integrin beta 1 / CD29 antibody	Rb pAb	Hu, Ms, Rat, Dog	WB, ICC/IF, IHC-P, IHC-Fr, IP
GTX60563	Integrin beta 1 / CD29 antibody [3B6]	Ms mAb	Hu, Mk	WB, IHC-P, FACS, ELISA
C GTX30898	Ly-6A/E (Sca-1) antibody [D7]	Rat mAb	Ms	WB, IHC-Fr, FACS, IP
K GTX35234	NG2 antibody	Rb pAb	Hu	WB
K GTX133453	PDGF Receptor beta (phospho Tyr1009) antibody	Rb pAb	Ms	WB
K GTX133454	PDGF Receptor beta (phospho Tyr1021) antibody	Rb pAb	Ms	WB
K GTX133609	PDGF Receptor beta (phospho Tyr740) antibody	Rb pAb	Ms	WB
K GTX133525	PDGF Receptor beta (phospho Tyr751) antibody	Rb pAb	Ms	WB, ICC/IF
K GTX133456	PDGF Receptor beta (phospho Tyr771) antibody	Rb pAb	Ms	WB
K GTX133521	PDGF Receptor beta (phospho Tyr857) antibody	Rb pAb	Ms	WB
C GTX10848	PDGF Receptor beta antibody	Gt pAb	Hu	WB, IHC-P, FACS, ELISA, IHC, Neutralizing/Blocking
C GTX42416	PDGF Receptor beta antibody [PR7212]	Ms mAb	Hu, Mk, Bb, Golden Syrian Hamster	WB, ICC/IF, IHC-P, IHC-Fr, FACS, IP, Depletion
K GTX102710	TNF Receptor I antibody	Rb pAb	Hu	WB
GTX00577-00	TNF Receptor I antibody [H398] (Low Endotoxin)	Ms mAb	Hu	IHC-P, IHC-Fr, FACS, IP, Functional Assay



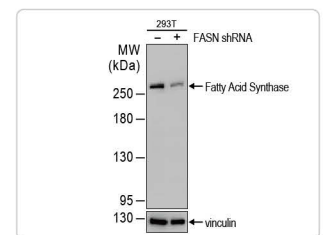
Integrin beta 1 / CD29 antibody (GTX128839) C K O



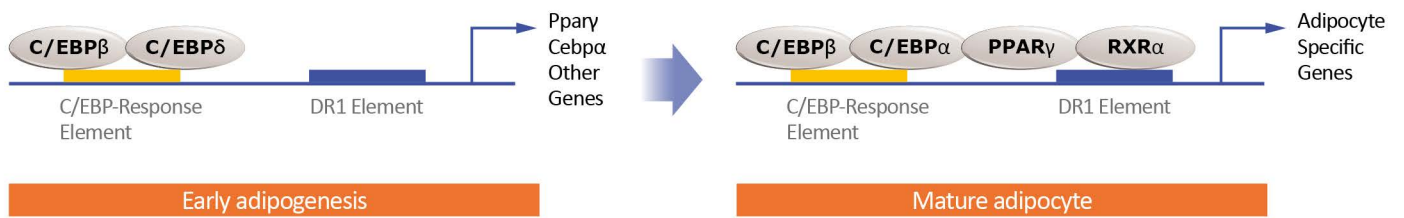
CD36 antibody [C1C3] (GTX100642) C O



Perilipin 1 antibody (GTX130139) C O



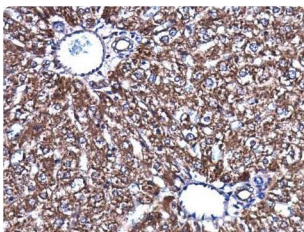
Fatty Acid Synthase antibody [N1], N-term (GTX109833) C K O



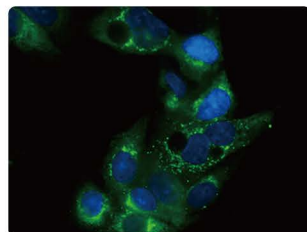
Regulatory Factors and Expressed Proteins

Citation Support KO/KD Validation Orthogonal Validation

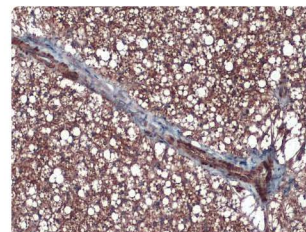
Cat. No.	Product Name	Clonality	Reactivity	Applications
GTX30764	Acetyl-CoA Carboxylase 1 (phospho Ser79) antibody	Rb pAb	Hu, Ms, Rat	WB
GTX132081	Acetyl-CoA Carboxylase 1 antibody	Rb pAb	Hu, Ms, Rat	WB, ICC/IF, IHC-P
GTX62960	Acetyl-CoA Carboxylase 1 antibody [EPR4971], N-term	Rb mAb	Hu, Ms, Rat	WB, ICC/IF, IHC-P, FACS
GTX112430	ACSL1 antibody	Rb pAb	Hu	WB, ICC/IF
GTX101306	Apolipoprotein D antibody	Rb pAb	Hu, Ms, Rat	WB, ICC/IF, IHC-P
GTX60446	Apolipoprotein E antibody [1H4]	Ms mAb	Hu	WB, IHC-P, FACS, ELISA
GTX100053	Apolipoprotein E antibody [C2C3], C-term	Rb pAb	Hu	WB, ICC/IF, IHC-P, IP, ELISA
GTX109941	ATGL antibody [N1C1]	Rb pAb	Hu, Ms	WB
GTX55304	C/EBP alpha (phospho Ser21) antibody	Rb pAb	Hu	WB, IHC-P
GTX55091	C/EBP alpha (phospho Thr226) antibody	Rb pAb	Hu, Ms, Rat	WB
GTX55349	C/EBP alpha (phospho Thr230) antibody	Rb pAb	Mk	WB
GTX60584	C/EBP alpha antibody [5B7]	Ms mAb	Hu	WB, ICC/IF, IHC-P, FACS, ELISA
GTX100674	C/EBP alpha antibody [N1], N-term	Rb pAb	Hu, Ms	WB, IP, ChIP assay
GTX100675	C/EBP beta antibody	Rb pAb	Hu	WB, ICC/IF, IHC-P, IP, ChIP assay, IHC
GTX15050	C/EBP beta antibody [1H7]	Ms mAb	Ms, Rat	WB, ICC/IF, IP, ChIP assay, Gel supershift assays
GTX116071	C/EBP delta (phospho Ser167) antibody	Rb pAb	Hu	WB, ChIP assay
GTX116073	C/EBP delta (phospho Thr171) antibody	Rb pAb	Hu	WB
GTX115047	C/EBP delta antibody [N1C3]	Rb pAb	Hu, Ms	WB, ICC/IF, ChIP assay
GTX33107	Complement Factor D antibody	Rb pAb	Hu, Ms	WB, IHC-P
GTX83209	FABP4 antibody [9B8D]	Ms mAb	Hu	WB, ELISA
GTX116036	FABP4 antibody [N3C3]	Rb pAb	Hu, Ms	WB, ICC/IF, IHC-P, ELISA
GTX629238	Fatty Acid Synthase antibody [GT237]	Ms mAb	Hu, Ms, Rat	WB, IHC-P
GTX109833	Fatty Acid Synthase antibody [N1], N-term	Rb pAb	Hu, Ms, Rat	WB, ICC/IF, IHC-P, IP
GTX103993	HOXC8 antibody [N1C3]	Rb pAb	Hu, Ms	WB, IHC-P
GTX53564	HOXC9 antibody	Rb pAb	Ms	WB
GTX101125	LPL antibody	Rb pAb	Hu, Ms, Chk	WB, ICC/IF
GTX83126	LPL antibody [2C5]	Ms mAb	Hu	WB, ELISA
GTX130139	Perilipin 1 antibody	Rb pAb	Hu, Ms	WB, IHC-P
GTX634406	Perilipin 1 antibody [GT2781]	Ms mAb	Ms	WB, ICC/IF, IHC-P
GTX37356	PGC alpha antibody	Rb pAb	Hu, Ms, Rat	WB
GTX32242	PPAR gamma (phospho Ser112) antibody	Rb pAb	Hu, Ms, Rat	WB, IHC-P
GTX19481	PPAR gamma antibody	Rb pAb	Hu, Ms, Rat, Bov, Dog, Hm, Pig	WB, IHC-P
GTX112784	UCP1 antibody	Rb pAb	Hu, Ms	WB, IHC-P
GTX632185	UCP1 antibody [GT3111]	Ms mAb	Ms	WB, IHC-P
GTX129468	ZIC1 antibody	Rb pAb	Hu, Ms	WB, IHC-P



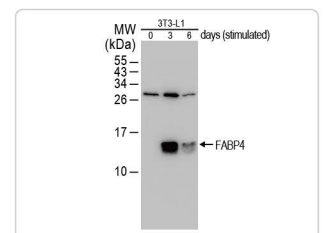
Acetyl-CoA Carboxylase 1 antibody (GTX132081)



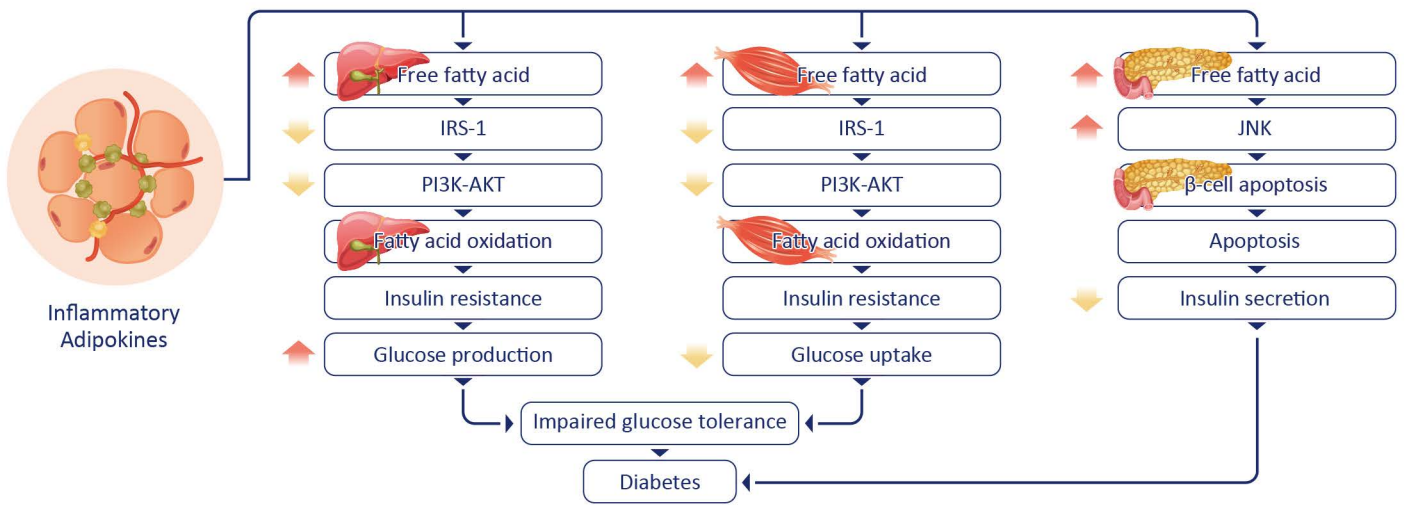
Apolipoprotein E antibody [C2C3], C-term (GTX100053)



UCP1 antibody (GTX112784)



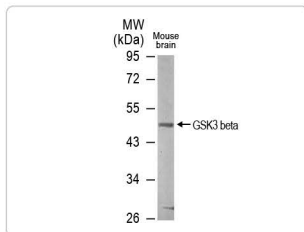
FABP4 antibody [N3C3] (GTX116036)



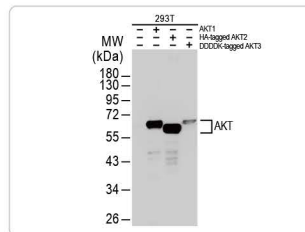
Insulin Resistance Signaling

Citation Support
 KO/KD Validation
 Comparable Abs
 IP/MS Analysis
 Orthogonal Validation
 Protein Overexpression

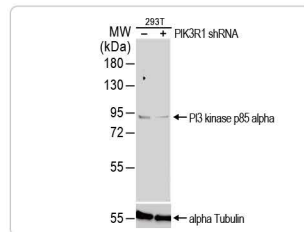
Cat. No.	Product Name	Clonality	Reactivity	Applications
GTX78916	IRS1 antibody	Rb pAb	Hu, Ms, Rat	WB, ICC/IF, IHC-P, ELISA
GTX133848	IRS1 (phospho Ser307) antibody	Rb pAb	Ms, Rat	WB, IHC-P
GTX24776	IRS1 (phospho Ser616) antibody	Rb pAb	Hu, Ms, Rat	WB, ICC/IF, IHC-P, FACS, IHC
GTX24868	IRS1 (phospho Tyr612) antibody	Rb pAb	Hu, Ms, Rat	WB, IHC-P, FACS, IHC
GTX24873	IRS1 (phospho Tyr896) antibody	Rb pAb	Hu, Ms	WB, IHC-P
GTX24865	IRS1 (phospho Ser312) antibody	Rb pAb	Hu	WB, IHC-P
GTX24882	IRS1 (phospho Tyr941) antibody	Rb pAb	Hu, Hm	WB
GTX24888	IRS1 (phospho Tyr1179) antibody	Rb pAb	Hu	WB
GTX101136	Insulin Receptor antibody	Rb pAb	Hu, Ms, Rat	WB, IHC-P
GTX25678	Insulin Receptor (phospho Tyr960) antibody	Rb pAb	Hu, Ms, Rat	WB, ICC/IF
GTX111173	PI3 kinase p110 beta antibody [N3C2], Internal	Rb pAb	Hu, Ms, Rat	WB, ICC/IF, IHC-P
GTX100462	PI3 kinase p110 alpha antibody	Rb pAb	Hu, Ms	WB, ICC/IF, IHC-P
GTX104639	PI3 kinase p110 gamma antibody [C3], C-term	Rb pAb	Hu, Ms, Rat	WB, IHC-P
GTX133757	PI3 kinase p110 delta antibody	Rb pAb	Hu	WB
GTX111068	PI3 kinase p85 alpha antibody [N2C1], Internal	Rb pAb	Hu, Ms, Rat	WB, IHC-P, IP
GTX132597	PI3 kinase p85 (phospho Tyr467)/p55 (phospho Tyr199) antibody	Rb pAb	Hu, Ms, Rat	WB, ICC/IF
GTX121937	AKT antibody [N3C2], Internal	Rb pAb	Hu, Ms, Rat, Japanese Medaka	WB, ICC/IF, IHC-P, IHC-Fr, IP, IHC
GTX128414	AKT (phospho Ser473) antibody	Rb pAb	Hu, Ms, Rat	WB, ICC/IF, IHC-P, IP
GTX133175	AKT (phospho Thr450) antibody	Rb pAb	Hu, Ms, Rat	WB
GTX28933	AKT (phospho Thr308) antibody	Rb pAb	Hu, Ms, Rat	WB, FACS, ELISA
GTX60674	GLUT4 antibody [3G10A3]	Ms mAb	Hu, Ms	WB, ICC/IF, IHC-P, FACS, ELISA
GTX111192	GSK3 beta antibody [C1C3]	Rb pAb	Hu, Ms, Rat	WB, ICC/IF, IHC-P
GTX83315	GSK3 beta antibody [3D10]	Ms mAb	Hu, Ms, Rat, Mk	WB, ICC/IF, IHC-P, FACS, ELISA
GTX50090	GSK3 beta (phospho Ser9) antibody	Rb pAb	Hu, Ms	WB, ICC/IF, IHC-P
GTX79063	GSK3 beta (phospho Tyr216) antibody	Rb pAb	Hu, Ms, Rat	WB, IHC-P
GTX132480	RAS antibody	Rb pAb	Hu, Rat, Zfsh, Frg, Squirrel	WB, IHC-P
GTX13056	RAS antibody [Y13-259]	Rat mAb	Hu, Ms, Rat	WB, ICC/IF, IHC-P, IHC-Fr, IP
GTX134462	ERK1/2 antibody	Rb pAb	Hu, Ms	WB
GTX24819	ERK1 (phospho Thr202/Tyr204) + ERK2 (phospho Thr185/Tyr187) antibody	Rb pAb	Human, Mouse, Rat, Drosophila, Bovine, Chicken, Caenorhabditis elegans, Xenopus	WB, ICC/IF, IHC-P, IHC, IHC (Free Floating)



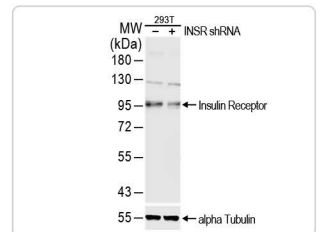
GSK3 beta antibody [C1C3] (GTX111192)



AKT antibody [N3C2], Internal (GTX121937)



PI3 kinase p85 alpha antibody [N2C1], Internal (GTX111068)



Insulin Receptor antibody (GTX101136)



International

Tel 886.3.6208988 Address 6F-2, No.89, Dongmei Rd., Hsinchu 300, Taiwan (R.O.C.)
 Fax 886.3.6208989 E-mail international@genetex.com

USA

Toll-free 1.877.GeneTex(1.877.436.3839) Address 2456 Alton Parkway, Irvine, CA 92606 USA
 Fax 1.949.309.2888 E-mail info@genetex.com

www.genetex.com

P.D - 0003 - 200203