

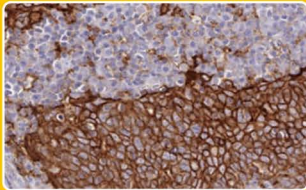
Immunohistochemistry (IHC) - Validated Recombinant Antibodies



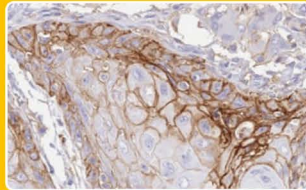
PD-L1 antibody [HL1041] (GTX635975)



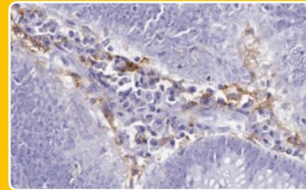
Human Cancer Tissues



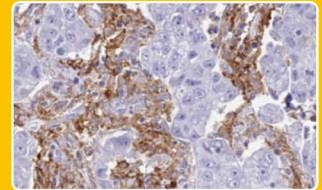
Squamous cell carcinoma (oral cavity) & PD-L1⁺ inflammatory cells



Squamous cell carcinoma (pharynx)

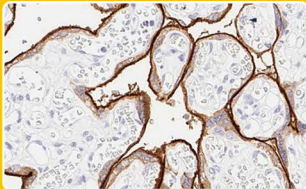


PD-L1⁻ colorectal adenocarcinoma & PD-L1⁺ inflammatory cells

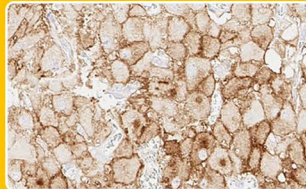


PD-L1⁻ esophageal adenocarcinoma & PD-L1⁺ tumor-associated macrophages

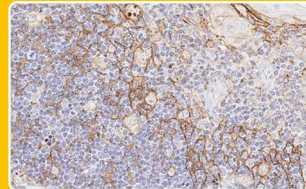
Normal Human Tissues



Placenta: PD-L1⁺ external membrane of the syncytiotrophoblast



Ovary: PD-L1⁺ corpus luteum cells

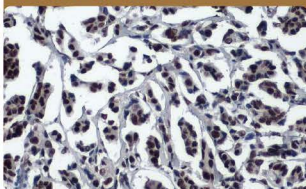





Thymus: PD-L1⁺ thymic epithelial cells

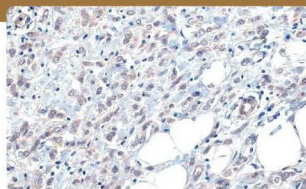





Esophagus: PD-L1⁻ squamous epithelium

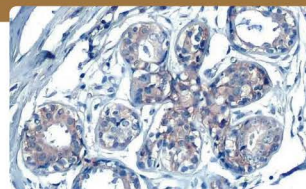
Breast Carcinoma



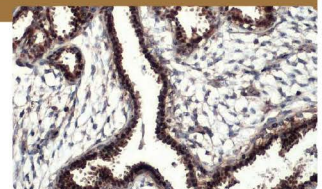
53BP1 antibody [HL275] (GTX635479)   





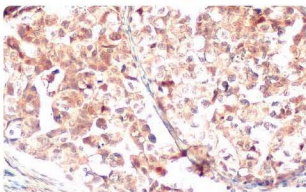
B-Raf antibody [HL1606] (GTX637085)   



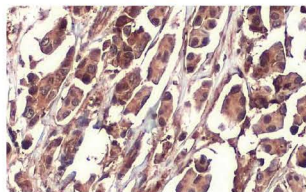
EpCAM antibody [HL1524] (GTX636998)  




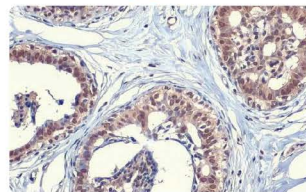
Estrogen Receptor alpha antibody [HL1082] (GTX636203)   




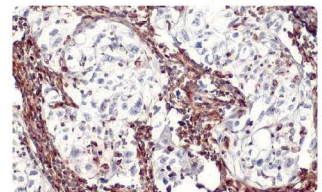
Gasdermin D antibody [HL1430] (GTX636896) 



NRF2 antibody [HL1021] (GTX635826)   

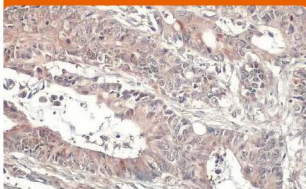



SOD1 antibody [HL1652] (GTX637250) 

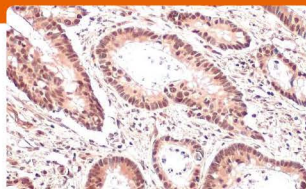


Vimentin antibody [HL1506] (GTX636980)   

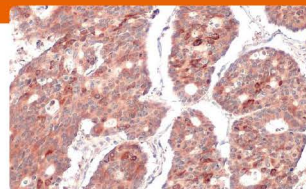
Colon Cancer



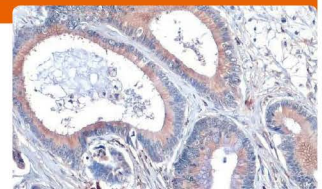
CYLD antibody [HL1260] (GTX636662) 




Mre11 antibody [HL1385] (GTX636825)   

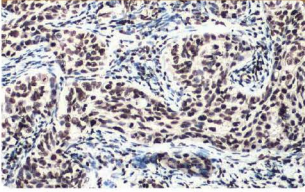


RRM1 antibody [HL1230] (GTX636578) 

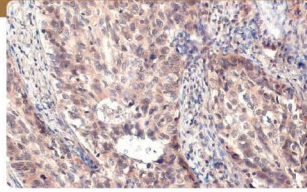


SCRIB antibody [HL1639] (GTX637220) 

Cervical Carcinoma

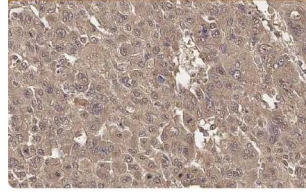



ATM (phospho Ser1981) antibody [HL1062] (GTX636086)  

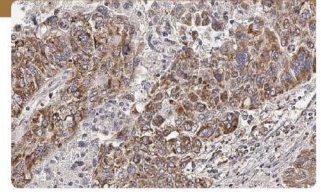


MMP1 antibody [HL1259] (GTX636661) 

Hepatocellular Carcinoma

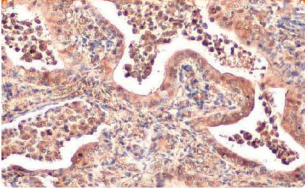


ADFP antibody [HL2145] (GTX638123) 

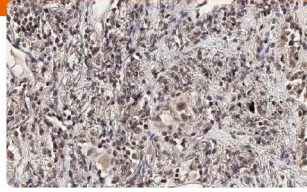


HCK antibody [HL1673] (GTX637272) 

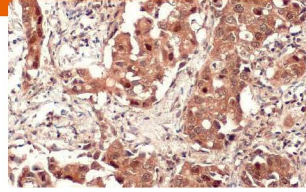
Lung Cancer



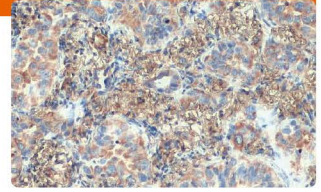
AKT1 antibody [HL1142] (GTX636413)  



Ataxin 3 antibody [HL1909] (GTX637658)  

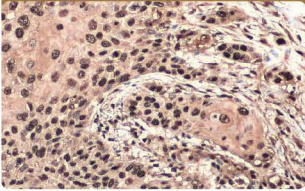




SQSTM1 / P62 antibody [HL1113] (GTX636328)   

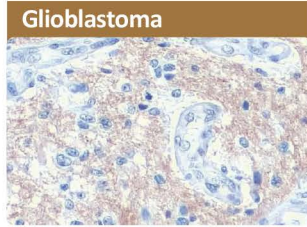



VPS35 antibody [HL1017] (GTX635821)  

Esophageal Carcinoma

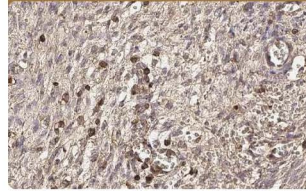


PAX3 antibody [HL160] (GTX635463)  

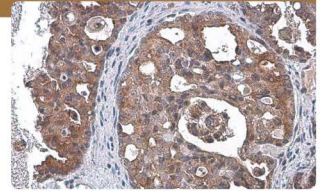


SNAP91 antibody [HL1657] (GTX637255) 

Ovarian Cancer

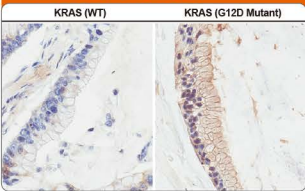




CD44 antibody [HL1650] (GTX637231)   

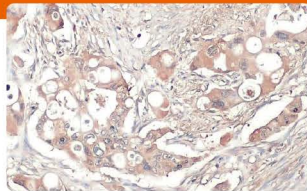


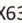

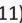
TSG101 antibody [4A10] (GTX70255)   

Pancreatic Cancer

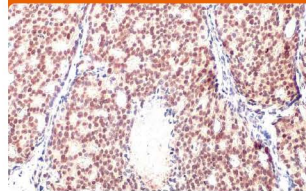




RAS (G12D Mutant) antibody [HL10] (GTX635362)   

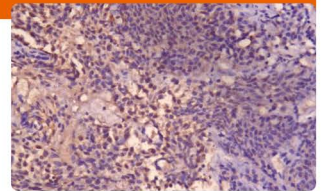


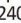
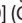
Thrombospondin 2 antibody [HL1140] (GTX636411)   

Prostate Cancer

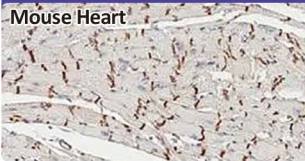



Androgen Receptor antibody [HL1049] (GTX636021)  

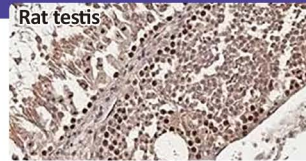


Androgen Receptor (ARv7 Splice Variant) antibody [HL1240] (GTX636639)  

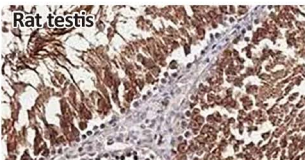
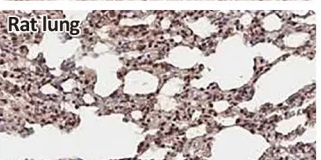
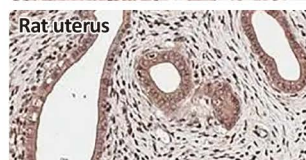
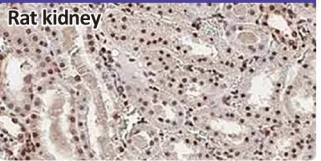
Mouse/Rat Tissue Arrays





beta Catenin antibody [HL1753] (GTX637403)  





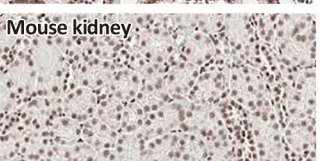
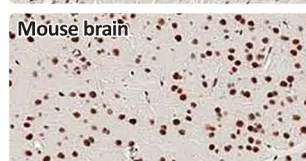
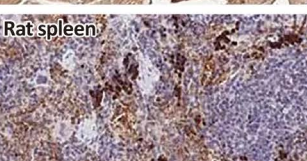
BRD9 antibody [HL1282] (GTX636696)  



Carbonic Anhydrase IX antibody [HL1410] (GTX636876)  



CBP antibody [HL2197] (GTX638201)  



 Citation Support  KO/KD Validation  Comparable Abs  Orthogonal Validation  Protein Overexpression  recombinant

GeneTex

International
USA

Tel: 886.3.6208988
Tel: 1.949.553.1900

Toll-free: 1.877.436.3839



www.genetex.com

PD-1007-230606