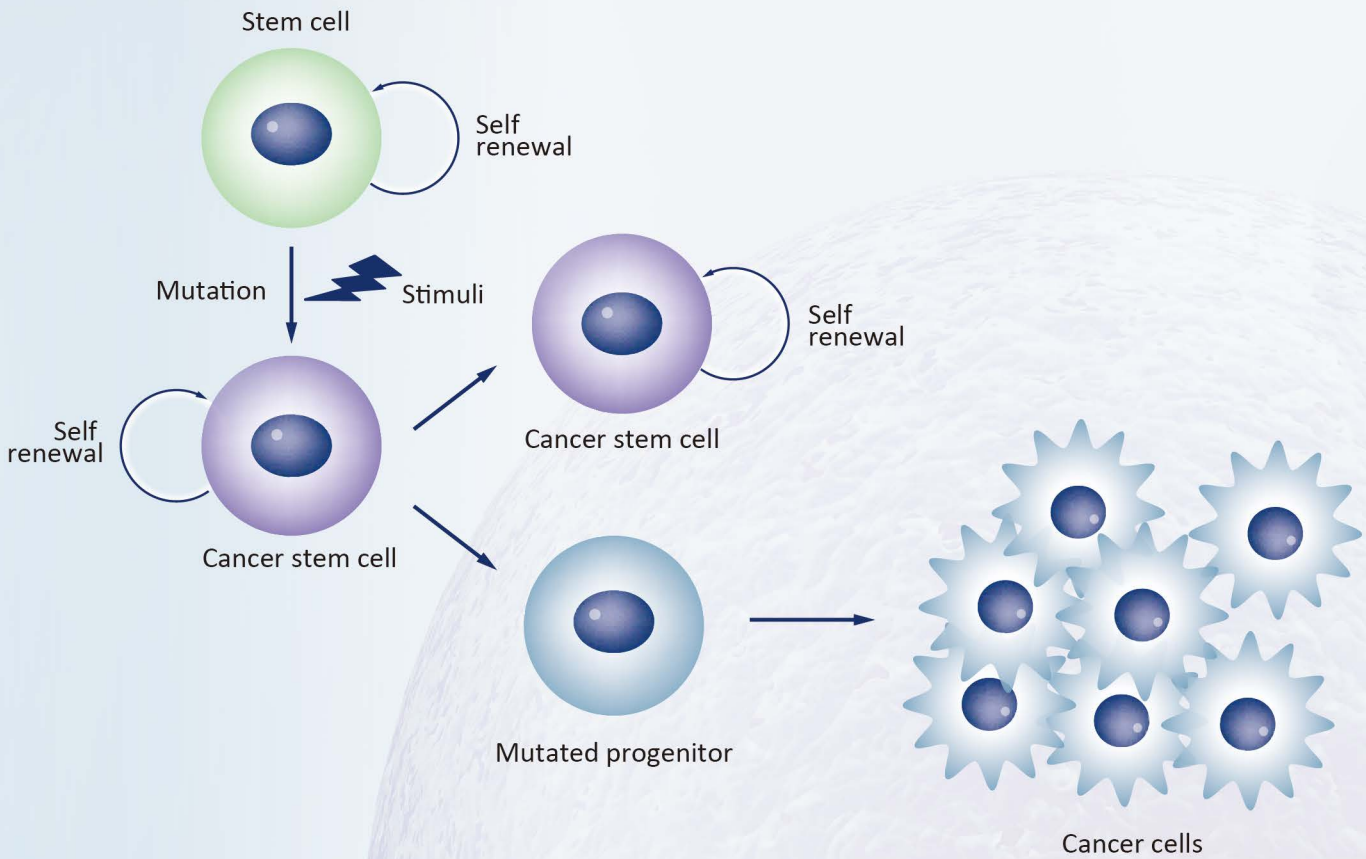


Cancer Stem Cells

- Your Expertise
- Our Antibodies
- Accelerated Discovery

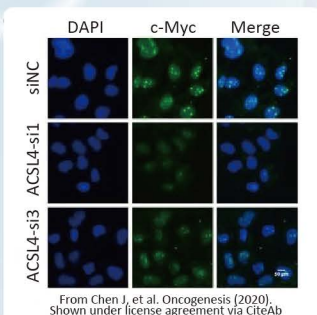
www.genetex.com



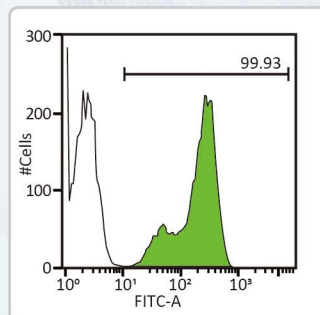
Cancer stem cells (CSCs) are increasingly being recognized as the key determinative cells of malignancies. CSCs are described as relatively quiescent cells capable of self-renewal and the generation of more differentiated daughter cells that constitute the bulk of the tumor mass. While there is still debate as to the existence of a single subset of CSCs versus a collection of CSC variants in some tumors, a growing body of literature links CSCs to all steps of tumorigenesis, from initiation to metastasis. Even more ominously, however, evidence suggests that these cells are responsible for therapeutic resistance and relapse, with their persistence often meaning a poor clinical prognosis. For these reasons, CSC biology has become a vigorously studied area of cancer research.

Stemness-Related Transcription Factors

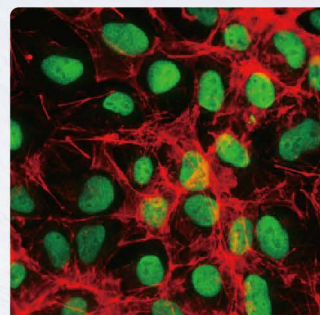
- Citation Support
- KO/KD Validation
- Comparable Abs
- Orthogonal Validation
- Protein Overexpression



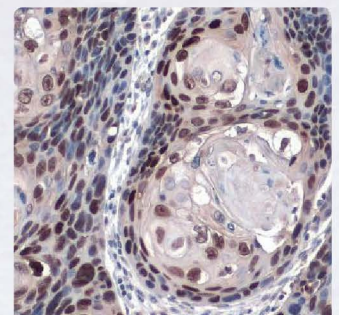
c-Myc antibody (GTX103436)



Nanog antibody [GT3312] (GTX627421)













Oct4 antibody [GT486] (GTX627419)















SOX2 antibody [N1C3] (GTX101507)

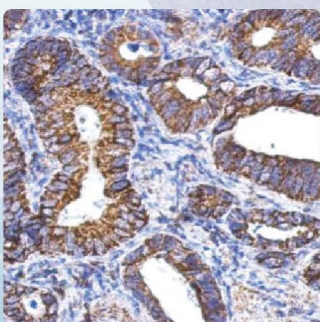
Colon	Head & Neck	Leukemia	Breast	Liver	Brain	Lung	Multiple Myeloma	Prostate	Pancreatic
CD133 ⁺ CD44 ⁺ CD166 ⁺ EpCAM ⁺ CD24 ⁺ CXCR4 ⁺ CK20 ⁺ CEA ⁺ LGR5 ⁺	CD44 ⁺ ALDH ⁺ YAP1 ⁺ BMI1 ⁺	CD34 ⁺ CD38 ⁻ HLA-DR ⁻ CD71 ⁻ CD90 ⁻ CD117 ⁻ CD123 ⁺	ESA ⁺ CD44 ⁺ CD24 ^{-/low} Lineage ⁻ ALDH1 ^{high}	CD133 ⁺ CD49f ⁺ CD90 ⁺	CD133 ⁺ BCRP1 ⁺ A2B5 ⁺ SSEA1 ⁺	CD133 ⁺ ABCG2 ^{high}	CD138 ⁻	CD44 ⁺ $\alpha 2\beta 1$ ^{high} CD133 ⁺	CD133 ⁺ CD44 ⁺ EpCAM ⁺ CD24 ⁺ ABCG2 ^{high}

Stemness-Related Transcription Factors

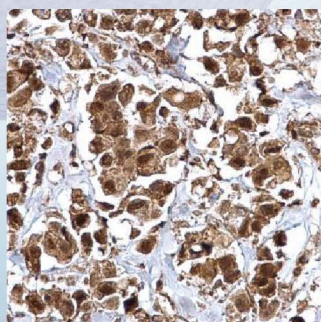
Cat. No.	Product Name	Clonality	Reactivity	Applications
GTX628459	 c-Myc antibody [GT168]	Ms mAb	Hu	WB, IHC-P, FACS, IP
GTX103436	 c-Myc antibody	Rb pAb	Hu,Ms,X. laevis	WB, ICC/IF, IHC-P, IHC-Fr, IP, ChIP assay
GTX101509	 KLF4 antibody	Rb pAb	Hu,Ms	WB, ICC/IF, IHC-P
GTX627421	 Nanog antibody [GT3312]	Ms mAb	Hu,Ms	WB, ICC/IF, FACS
GTX100863	 Nanog antibody [N3C3]	Rb pAb	Hu,Ms,C. simum	WB, ICC/IF, IHC-P, IHC-Fr, IP, ELISA, IHC, Sandwich ELISA
GTX627419	 Oct4 antibody [GT486]	Ms mAb	Hu,Ms	WB, ICC/IF, IHC-P, FACS, IP
GTX101497	 Oct4 antibody	Rb pAb	Hu,Ms,Rat	WB, ICC/IF, IHC-P, IHC-Fr, FACS, IP
GTX109983	 SALL4 antibody [C1C2], Internal	Rb pAb	Hu,Ms,Pig	WB, ICC/IF, IHC-P
GTX627404	 SOX2 antibody [GT1876]	Ms mAb	Hu,Ms,Rat,Zfsh	WB, ICC/IF, IHC-P, IHC-Fr, FACS, IP
GTX101507	 SOX2 antibody [N1C3]	Rb pAb	Hu,Ms,Rat,Frg,C. simum	WB, ICC/IF, IHC-P, IHC-Fr, FACS, IP

Differentiated and Cell Type-Specific Markers

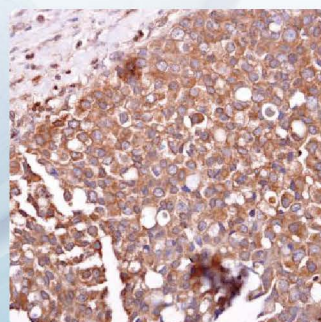
Cat. No.	Product Name	Clonality	Reactivity	Applications
GTX14538	A2B5 antibody [105]	Ms mAb	Hu,Ms,Rat	ICC/IF
GTX03718	ABCB5 antibody	Rb pAb	Hu,Ms,Rat	WB, ICC/IF, IHC-P, FACS, ELISA
GTX100437	 ABCG2 antibody	Rb pAb	Hu,Ms	WB, IHC-P
GTX123973	 ALDH1A1 antibody	Rb pAb	Hu,Ms,Rat,Zfsh,Cat	WB, ICC/IF, IHC-P, IHC-Wm
GTX115148	ALDH1A2 antibody [C1C3]	Rb pAb	Hu,Ms,Rat,Zfsh	WB, IHC-P, IHC-Wm
GTX110784	 ALDH1A3 antibody [N2C2], Internal	Rb pAb	Hu,Ms,Rat	WB, ICC/IF, IHC-P
GTX107279	 ALDH1B1 antibody	Rb pAb	Hu,Ms	WB, ICC/IF, IHC-P
GTX131047	ALDH1L1 antibody	Rb pAb	Hu,Ms,Rat	WB, IHC-Fr
GTX114008	 Bmi1 antibody	Rb pAb	Hu,Ms,Cat,Dog	WB, ICC/IF, IHC-P, IP
GTX102788	 CD13 antibody	Rb pAb	Hu	WB, IHC-P
GTX101512	 CD19 antibody [C1C3]	Rb pAb	Hu,Ms	WB, ICC/IF, IHC-P, FACS
GTX628420	CD20 antibody [GT0008]	Ms mAb	Hu	FACS
GTX100209	 CD20 antibody [C2C3], C-term	Rb pAb	Hu,Cat,Dog	WB, ICC/IF, IHC-P
GTX37755	 CD24 antibody	Rb pAb	Hu,Rat	WB, IHC-P
GTX135137	 CD26 antibody	Rb pAb	Hu	WB
GTX104406	CD27 antibody	Rb pAb	Hu	WB, IHC-P
GTX637644	 CD34 antibody [HL1895]	Rec Rb mAb	Hu	FACS
GTX111632	 CD34 antibody [N2C3]	Rb pAb	Hu	WB, IHC-Fr



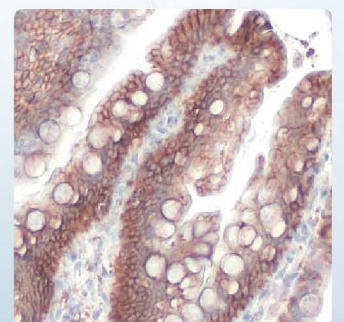
ALDH1A1 antibody (GTX123973)



Bmi1 antibody (GTX114008)



ABCG2 antibody (GTX100437)



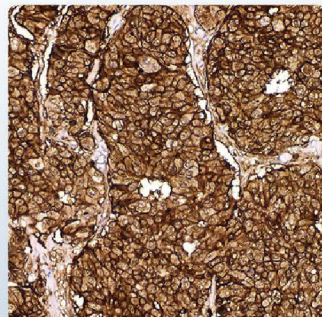
EpCAM antibody [HL1339] (GTX636759)



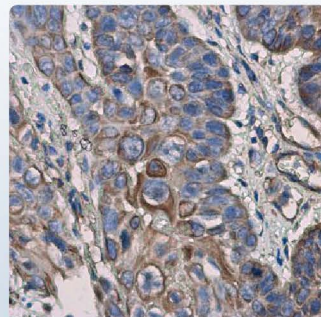
Cat. No.	Product Name	Clonality	Reactivity	Applications
GTX132579	CD38 antibody	Rb pAb	Hu	WB
GTX637231	CD44 antibody [HL1650]	Rec Rb mAb	Hu,Cat,Dog	WB, ICC/IF, IHC-P
GTX628895	CD44 antibody [GT462]	Ms mAb	Hu	WB, IHC-P, FACS, IP
GTX102111	CD44 antibody	Rb pAb	Hu,Rat,Rb	WB, ICC/IF, IHC-P, IHC-Fr, IP, LCI
GTX628417	CD45 antibody [GT0005]	Ms mAb	Hu	FACS
GTX116018	CD45 antibody	Rb pAb	Hu,Ms,Rat,Rb	WB, ICC/IF, IHC-P, FACS
GTX132762	CD47 antibody	Rb pAb	Hu	WB
GTX108732	CD66e antibody	Rb pAb	Hu	WB, ICC/IF, IHC-P
GTX102596	CD71 antibody [N2C1], Internal	Rb pAb	Hu,Ms	WB, ICC/IF
GTX637416	CD90 antibody [HL1766]	Rec Rb mAb	Hu,Ms,Rat	WB, ICC/IF, IHC-P
GTX130072	CD90 antibody	Rb pAb	Hu,Ms,Rat	WB, ICC/IF, IHC-P, IHC-Fr
GTX34223	CD96 antibody	Rb pAb	Hu	WB
GTX100508	CD105 antibody [N3C3]	Rb pAb	Hu,Ms	WB, IHC-P
GTX636673	CD133 antibody [HL1271]	Rec Rb mAb	Hu,Ms,Rat	WB, IHC-P
GTX637124	CD133 antibody [HL1631]	Rec Rb mAb	Hu	FACS
GTX100567	CD133 antibody [C1C2], Internal	Rb pAb	Hu	WB, ICC/IF, IHC-P, FACS
GTX42394	CD151 antibody [11G5a]	Ms mAb	Hu	WB, IHC-P, IHC-Fr, FACS, IP, ELISA
GTX130098	CD166 antibody	Rb pAb	Hu,Ms,Rat	WB, IHC-P
GTX15677	CEA antibody [1106]	Ms mAb	Hu	WB, ICC/IF, FACS, IP, ELISA, RIA
GTX81335	c-Kit antibody, N-term	Rb pAb	Hu,Ms	WB, IHC-P, FACS
GTX631992	c-Met antibody [GT556]	Ms mAb	Hu	WB, IHC-P, FACS, IP
GTX100637	c-Met antibody [C3], C-term	Rb pAb	Hu	WB, ICC/IF, IP
GTX100389	CXCR1 antibody [C2C3], C-term	Rb pAb	Hu,Ms	ICC/IF, IHC-P, IHC-Fr
GTX129719	CXCR4 antibody	Rb pAb	Hu	WB
GTX110600	Cytokeratin 20 antibody [N2C2], Internal	Rb pAb	Hu,Ms	WB, ICC/IF, IHC-P
GTX636759	EpCAM antibody [HL1339]	Rec Rb mAb	Hu,Ms,Rat	WB, ICC/IF, IHC-P, FACS
GTX635967	EpCAM antibody [GT25512]	Ms mAb	Hu	WB, ICC/IF, IHC-P, FACS
GTX113459	HLA-DR antibody [N2C3]	Rb pAb	Hu	WB, IHC-P
GTX637305	hnRNP A2B1 antibody [HL1706]	Rec Rb mAb	Hu,Ms,Rat	WB, ICC/IF, IHC-P
GTX127928	hnRNP A2B1 antibody	Rb pAb	Hu,Ms,Rat	WB, ICC/IF, IHC-P, IP
GTX100450	ICAM1 / CD54 antibody [N1C2]	Rb pAb	Hu,Rat	WB, IHC-P
GTX101563	IL3 Receptor alpha antibody [N2C2], Internal	Rb pAb	Hu	WB, IHC-P
GTX35237	Integrin alpha 2 antibody	Rb pAb	Hu,Ms,Rat	WB, ICC/IF, IHC-P
GTX100565	Integrin alpha 6 antibody [N3C2], Internal	Rb pAb	Hu,Ms,Rat	WB, ICC/IF
GTX636657	Integrin beta 1 / CD29 antibody [HL1255]	Rec Rb mAb	Hu,Ms,Cat,Dog	WB, IHC-P
GTX636658	Integrin beta 1 / CD29 antibody [HL1256]	Rec Rb mAb	Hu,Cat,Dog	WB, ICC/IF
GTX128839	Integrin beta 1 / CD29 antibody	Rb pAb	Hu,Ms,Rat,Dog	WB, ICC/IF, IHC-P, IHC-Fr, IP
GTX02823	Integrin beta 3 antibody [GT1226]	Rec Rb mAb	Hu,Ms,Rat	WB, IHC-P
GTX130204	LGR5 antibody	Rb pAb	Hu,Ms	WB, ICC/IF, IHC-P
GTX101540	Musashi 1 antibody [N3C3]	Rb pAb	Hu,Ms	WB, ICC/IF, IHC-Fr, IP
GTX630201	Nestin antibody [GT623]	Ms mAb	Hu,Ms,Rat	WB, ICC/IF, IHC-P, IHC-Fr
GTX102262	p75 NGF Receptor / CD271 antibody	Rb pAb	Hu,Ms,Rat	WB, ICC/IF, IHC-P, IHC-Fr, FACS
GTX60783	Rex1 antibody [5E11A6]	Ms mAb	Hu,Ms	WB, IHC-P, FACS, ELISA
GTX48035	SSEA-1 / CD15 antibody [MC-480]	Ms mAb	Hu,Ms,Rat	WB, ICC/IF, IHC-P, IHC-Fr, FACS
GTX54537	Syndecan-1 / CD138 antibody	Rb pAb	Hu,Ms,Rat	WB, ICC/IF, IHC-P, ELISA
GTX65883	TIM-3 antibody	Rb pAb	Hu,Ms	WB, ICC/IF
GTX637643	YAP1 antibody [HL1894]	Rec Rb mAb	Hu	WB, ICC/IF, IHC-P
GTX129151	YAP1 antibody	Rb pAb	Hu,Ms,Deer	WB, ICC/IF, IHC-P, IHC-Fr, IP



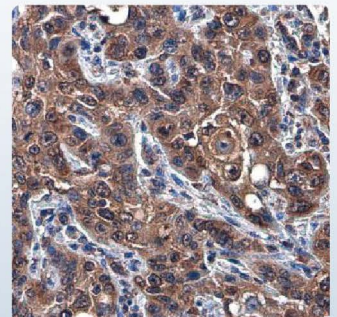
CD133 antibody [HL1271]
 (GTX636673)



CD44 antibody [GT462]
 (GTX628895)



IL3 Receptor alpha antibody [N2C2],
 Internal (GTX101563)



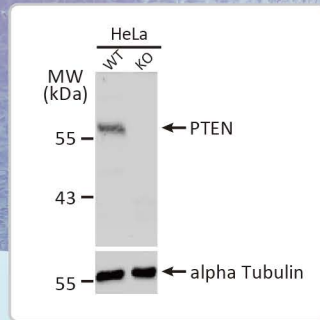
c-Met antibody [GT556]
 (GTX631992)

CSC Signaling Pathways

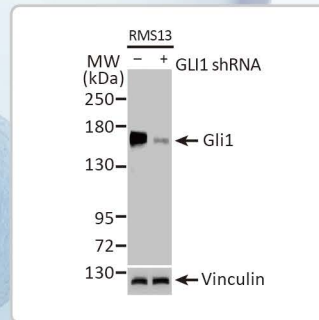
Cat. No.	Product Name	Clonality	Reactivity	Applications
GTX121937	AKT antibody [N3C2], Internal	Rb pAb	Hu,Ms,Rat,Pig,Japanese Medaka	WB, ICC/IF, IHC-P, IHC-Fr, IP
GTX128414	AKT (phospho Ser473) antibody	Rb pAb	Hu,Ms,Rat,Pig	WB, ICC/IF, IHC-P, IP
GTX636413	AKT1 antibody [HL1142]	Rec Rb mAb	Hu,Rat,Cat,Dog	WB, ICC/IF, IHC-P
GTX110613	AKT1 antibody	Rb pAb	Hu,Ms	WB, IHC-P, IP
GTX111612	AKT2 antibody	Rb pAb	Hu	WB, ICC/IF, IHC-P
GTX113312	AKT3 antibody	Rb pAb	Hu,Ms	WB, ICC/IF, IHC-P
GTX637403	beta Catenin antibody [HL1753]	Rec Rb mAb	Hu,Ms,Cat,Dog	WB, ICC/IF, IHC-P
GTX101435	beta Catenin antibody [N1N2-2], N-term	Rb pAb	Hu,Ms,Rat,Zfsh,Rb,Cat,Dog	WB, ICC/IF, IHC-P, IHC-Wm, FACS, IP, ChIP assay, IHC
GTX635619	Gli1 antibody [HL247]	Rec Rb mAb	Hu,Ms,Rat	WB, IHC-P
GTX106207	Gli1 antibody	Rb pAb	Hu,Ms	WB, ICC/IF, IHC-P, IP
GTX124274	Gli1 antibody	Rb pAb	Hu,Ms	WB, ICC/IF, ChIP-seq
GTX57670	JAK2 antibody [AT53B7]	Ms mAb	Hu	WB, ICC/IF, FACS
GTX132784	JAK2 (phospho Tyr1007/1008) antibody	Rb pAb	Hu,Ms	WB
GTX102090	NFkB p65 antibody	Rb pAb	Hu,Ms,Rat	WB, ICC/IF, IHC-P, IHC-Fr, IP, ChIP assay
GTX107678	NFkB p65 antibody	Rb pAb	Hu,Ms,Rat	WB, ICC/IF, IHC-P, IP, EMSA
GTX637436	NFkB p105 antibody [HL1784]	Rec Rb mAb	Hu	WB
GTX110585	NFkB p105 antibody	Rb pAb	Hu,Ms,Dog	WB, ICC/IF, IHC-P, ChIP assay, IHC
GTX101593	NOTCH2 antibody [C2], C-term	Rb pAb	Hu,Ms	WB, ChIP assay, ChIP-seq
GTX107779	PI3 kinase p55 gamma antibody	Rb pAb	Hu,Rat	WB, IHC-P
GTX636838	PI3 kinase p85 alpha antibody [HL1398]	Rec Rb mAb	Hu,Ms,Rat	WB, ICC/IF, IHC-P
GTX111068	PI3 kinase p85 alpha antibody [N2C1], Internal	Rb pAb	Hu,Ms,Rat	WB, IHC-P, IP
GTX132597	PI3 kinase p85 (phospho Tyr467)/p55 (phospho Tyr199) antibody	Rb pAb	Hu,Ms,Rat	WB, ICC/IF
GTX132466	PI3 kinase p150 antibody	Rb pAb	Hu,Ms	WB, IHC-P, IP
GTX101025	PTEN antibody	Rb pAb	Hu,Ms,Rat,Cat,Dog,Pig	WB, ICC/IF, IHC-P
GTX130418	PTEN (phospho Thr366/Ser370) antibody	Rb pAb	Hu,Ms,Rat	WB, ICC/IF
GTX103117	STAT2 antibody [C2C3], C-term	Rb pAb	Hu,Ms	WB, IHC-P, IP
GTX133945	STAT2 (phospho Tyr690) antibody	Rb pAb	Hu	WB
GTX636400	STAT3 antibody [HL1134]	Rec Rb mAb	Hu,Ms,Rat,Cat,Dog	WB, IHC-P
GTX108630	STAT3 antibody	Rb pAb	Hu,Zfsh	WB, FACS, IP
GTX104616	STAT3 antibody [C3], C-term	Rb pAb	Hu,Ms,Rat,Plant	WB, ICC/IF, IHC-P
GTX636938	STAT3 (phospho Tyr705) antibody [HL1464]	Rec Rb mAb	Hu,Rat	WB
GTX118000	STAT3 (phospho Tyr705) antibody	Rb pAb	Hu,Ms,Zfsh	WB, ICC/IF, IHC-P, FACS
GTX113273	STAT6 antibody	Rb pAb	Hu,Ms	WB, ICC/IF, IHC-P, IP
GTX105955	Wnt1 antibody	Rb pAb	Hu,Ms,Rat	WB
GTX128101	Wnt3a antibody	Rb pAb	Hu,Rat	WB, IHC-P
GTX101085	Wnt4 antibody	Rb pAb	Hu,Ms,Rat	WB, IHC-P
GTX111187	Wnt5a antibody	Rb pAb	Hu,Ms,Rat	WB, IHC-P
GTX105680	Wnt7a antibody	Rb pAb	Hu,Ms	WB, IHC-P
GTX128107	Wnt7b antibody	Rb pAb	Hu	WB, ICC/IF
GTX637123	Wnt11 antibody [HL1630]	Rec Rb mAb	Hu	WB
GTX105971	Wnt11 antibody	Rb pAb	Hu,Ms,Rat	WB, ICC/IF, IHC-P, IHC
GTX636972	Wnt16 antibody [HL1498]	Rec Rb mAb	Hu,Ms	WB, ICC/IF, IHC-P



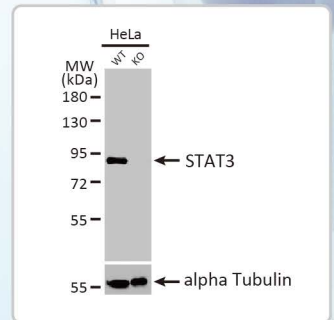
beta Catenin antibody [HL1753] (GTX637403)



PTEN antibody (GTX101025)



Gli1 antibody [HL247] (GTX635619)



STAT3 antibody [HL1134] (GTX636400)